

July 2019  
Vol.126 No.1544  
Price 50p

# SAINTS ALIVE



## ALL SAINTS

The Parish Magazine  
of All Saints' Parish Church,  
Cheadle Hulme

# INFORMATION PAGE

## SUNDAY SERVICES

8.00am Holy Communion.

10.00am Parish Eucharist.

6.30pm Evensong.

## WEEKDAY SERVICES

### Holy Communion

Tuesday 9.30am.

Thursday 10.00am.

Holy Days to be announced.

### Matins

Daily at 9.00am.



## CONFESSION AND SPIRITUAL COUNSELLING

By arrangement with the Clergy.

## ARRANGEMENTS FOR BAPTISMS, BANNS AND WEDDINGS

All enquiries to Rev'd Janet Bacon (485 3455).

## MOTHERS' UNION

Corporate Communion 10.00am on the 2nd Thursday in Church. Details of all meetings are in Saints Alive and weekly notices. See Notice Board.

## MENS' SOCIETY

Monthly meetings on the 1st Thursday, September to May, at 7.30pm in the Meeting Room.  
Chairman: Mr Bradley Torbitt (486 9387).  
Secretary: Mr Mike Parry (485 7886).

## FRIDAY CLUB

Fortnightly meetings on Friday evening usually in the Meeting Room at 7.30pm. Open to women of all age groups. Chairman is Lily Mitchelhill (485 5187) Secretary is Julia Ball (440 8647)

## GUILD OF ST RAPHAEL

The Guild exists to encourage the Church's ministry of healing, and the practice of regular intercession for the sick. The branch meets monthly to say an Office of Intercession: there is also a monthly Corporate Communion. For further information please contact: The Secretary: Pat Yates (485 4546).

## BIBLE READING FELLOWSHIP

Secretary: Mrs Julia Ball (440 8647).

## UNIFORMED ORGANISATIONS

**Cubs:** (7th Cheadle Hulme) Meet on a Friday 6.30pm - 8.00pm at Thorn Grove.  
Andrew Thompson  
email:andy.thompson@cheadlescouts.org.uk

**Beavers:** (7th Cheadle Hulme)  
Meet on a Friday 6.00pm - 7.15pm in the Parish Rooms. Mrs J. Metcalfe  
jacquie.metcalfe@cheadlescouts.org.uk

**Brownies:** (11th Cheadle Hulme)  
Meet on a Monday 6.00pm - 7.15pm at Thorn Grove.  
Jo Taylor  
brownow11thcheadlehulme@yahoo.com

**Rainbows:** (2nd Cheadle Hulme)  
Meet on a Monday 6.00pm - 7.00pm





# Vicar's Letter

Dear friends,

What occupies your thoughts at the moment? As I write this we are in the middle of a leadership contest to determine our next Prime Minister. What criteria would you like to see adopted by those who are making that choice, or any choice for that matter, be it Prime Minister, Leader of the Opposition or world leader.

Many just want them to get their country back on track again. Others consider long term aims and objectives while some look for hidden agendas. But what about the character of the candidate? Does that matter? Some who campaign for office have admitted to things they have done in the past which have been morally and sometimes legally wrong. Should a person's past – if it is definitely in the past – be forgiven? The Christian view is that, through faith in Christ, where there is true repentance then there is forgiveness. Jesus spoke many times about forgiveness and the way he spoke seemed to suggest that forgiveness is as much benefit for those who forgive as those who are forgiven.

In a society, where so many of our young people are disaffected and dissatisfied, good role models are important. Sadly, there are too few good role models around. People create idols of celebrities, many of whom are bad role models whose behaviour leads to the thought that "if they can do this and be famous/be rich/lead a country etc. then it's OK for me to do it".

There is surely a need for us to pray for good role models in our world and for people to be able to recognise a good role model when they see one. A person who has the Christ-like qualities of compassion, truthfulness, wisdom and selflessness and yet someone who is not afraid to stand up to those who try to exploit the weak and vulnerable.

Of course, none of us is perfect and money, fame and power can be hard to cope with. Those who put their head above the parapet of anonymity need a lot of courage as the media will try to find something wrong with anyone who seems too good to be true.

We may feel we are powerless to have influence over who leads our world but we can point people to Christ - the perfect role model - and let them see, in his life, the qualities of what makes someone worthy of respect and loyalty.

*Janet*

**COPY DEADLINE FOR AUGUST - JULY 6TH (6.00PM)  
ALL COPY TO THE EDITOR PLEASE**

# “Aunt” Lila



I am not quite sure how “Aunt” Lila came to be a visitor at my parents’ house back in the 1950s. I do know that she was an elderly American lady who was on a trip of a lifetime, far from the State of Virginia, which was where she came from, and where she was heading at the end of a trip round Europe. It soon became clear to us that it was proving to be almost too much for a woman of

her age. It was all right for the loving family members who had organised it. She was the one who had brought them up from being orphans, and this trip was one of the ways they were showing how much they appreciated her love and devotion.

She had enjoyed a boat trip in a cruiser down the Danube, or was it the Rhine? Until she got home and started to sort out all the photographs she had taken on her travels it was soon abundantly clear - she had no idea *where* she had been. Yes, she knew that she was with us, here in England, and understood that the next day they were taking her up to Scotland. And then, and then, she was going to the one place which she yearned to see - her home - *back home*.

Of course, she had only travelled in Europe. If she had been younger and fitter, her family might have arranged a follow-up. The whole world had been made easily accessible to those who would want to go further afield. Nowadays places which hitherto were far beyond the reach of any but those who had the resources to venture far from the civilised parts of the world, can join one of the regular organised tours to them.

I remember she visited us in the year 1953, just at the time when we were celebrating the Coronation of Queen Elizabeth. It was at that time that the news came through that (later Sir) Edmund Hillary and Sherpa Tensing had reached the summit of Mount Everest, the highest mountain in the world. It was a challenge which until that time had cost the lives of so many of those who had gone before. I have read in my newspaper that now, in 2019, there is a queue of people who are just waiting for their climb to the top.

Whether Aunt Lila actually *enjoyed* her ‘trip of a lifetime’ I don’t know. I somehow doubt whether she could have been persuaded to go on another similar venture at her age. It is many years since we met her. I do believe, even after such short acquaintance that she was one of those good souls one would willingly take to the ends of the earth, and, would look forward to meeting again in the heavenly realms. *Claud Metson*



# Church of England Alexa Skill Asked 75,000 Questions In First Year

A year after its launch, the Church of England's award-winning Alexa skill has been asked more than 75,000 questions, according to recent data. The smart speaker skill was originally launched with prayers, explanations of the Christian faith and details of where to find the nearest church for local events and services based on location. The data also reveals a trend of highest numbers of people using the skill in the evening. As a result of this, the Church's Digital and Church House Publishing teams added a wider range of mealtime, evening and night prayers during the year. More family prayers have also been added, and integration improved with A Church Near You, the national church finder tool, to show maps of where the nearest church is. A range of videos have also been added to bring the Christian faith to life and showcase the social action work of churches across the country. In a typical week people ask the following questions by topic area:

Read today's daily 'EasterPilgrim' reflection – 16%

Say a prayer – 40%

Explore the Christian faith – 31%

Share a grace before a meal – 6%

Where is my local church? – 7%.

The skill is average 4.2 out of five stars on the Alexa store, with comments such as "Love it – great example to the kids on how to pray".

The Archbishop of York, Dr John Sentamu, said: "The aim of the Alexa skill is to help users to know more of the love of Jesus Christ, to enable regular churchgoers and those exploring faith to connect with God in another way and at a time that's right for them."

Adrian Harris, Head of Digital at the Church of England, said: "We are pleased with the levels of engagement in the first year of launching the skill, which was built in just three months in 2018." The skill has also been recognised at a number of leading digital industry awards.

While the Alexa skill has been built first, the church is aiming to launch for Google Home and Apple HomePod devices in due course.

This is the phase one of the project, built jointly by the Church's Digital and Church House Publishing teams with specialist developer Aimer Media Ltd. They're planning to ensure users can find more answers to faith questions and to explore on other platforms in future.

The audio content features on the Church's website as part of the prayer of the day.

It will be integrated into Church House Publishing apps and audiobooks in due course.

To activate the Church of England skill "Alexa, open the Church of England".

A full list of commands is available on the C of E's dedicated Alexa page at:

[www.churchofengland.org/our-faith/try-church-englands-alexa-skill](http://www.churchofengland.org/our-faith/try-church-englands-alexa-skill)

# Sir David Attenborough backs major report on plastics from Tearfund

A new report has revealed for the first time that one person is dying every 30 seconds in developing countries from diseases and illnesses caused by plastic pollution and uncollected rubbish dumped or burnt near their homes.

The new figures were released in *No Time to Waste: Tackling the Plastic Pollution Crisis Before it's Too Late*, by international relief and development agency Tearfund, in collaboration with conservation charity Fauna & Flora International (FFI), the Institute of Development Studies and waste management charity WasteAid.

The report looks at the health impact of plastic pollution and rubbish on the world's poorest people for the first time. It found that each year between 400,000 and a million people (at the upper end one person every 30 seconds) are dying in developing countries from illnesses and diseases like diarrhoea, malaria and cancers caused by living near uncollected waste and plastic pollution. It calls on multinational companies to change their business models by committing to reporting the number of single-use plastic items they distribute in developing countries by 2020, and halving this by 2025.

"This report is one of the first to highlight the impacts of plastic pollution not just on wildlife but also on the world's poorest people," Sir David, a vice president at Fauna & Flora International, said. "It is high time we turn our attention fully to one of the most pressing problems of today – averting the plastic pollution crisis – not only for the health of our planet, but for the wellbeing of people around the world. We need leadership from those who are responsible for introducing plastic to countries where it cannot be adequately managed, and we need international action to support the communities and governments most acutely affected by this crisis."

Globally two billion people (one in four), don't have their rubbish collected. This often leads to disease and death. When rubbish isn't collected it often builds up in rivers and causes flooding, which can lead to diarrhoea and a host of infectious diseases. Often the only other way to dispose of waste is to burn it in the streets, with the resulting fumes being extremely damaging to health as well as – in some countries – being the single largest source of carbon emissions, contributing to climate change.

Dr Ruth Valerio, Global Advocacy & Influencing Director at Tearfund said: "Tearfund's new Rubbish Campaign calls for urgent action from four multinationals – Coca-Cola, Nestlé, PepsiCo and Unilever. They sell billions of products in single-use plastic packaging in poorer countries where waste isn't collected, in the full knowledge that people will have no choice but to burn it, discard it in waterways or live among it.

Other key facts in the report: Every second a double-decker busload of plastic waste is burned or dumped in developing countries. Global plastic production emits 400 million tonnes of greenhouse gases each year. An estimated 8 – 12.7 million tonnes of plastic is entering the oceans every year. Every 30 seconds the UK throws away 2 double-decker busloads of plastic waste. Living amongst plastic pollution and uncollected waste doubles the incidence of diarrhoeal disease.

To read the report go to: [www.tearfund.org/notimetowaste](http://www.tearfund.org/notimetowaste)



# English cathedrals celebrate £8m National Lottery funding boost

Four Church of England cathedrals have benefited from a cash injection of over £8m to help them engage with their communities through imaginative outreach, arts, heritage and learning projects, thanks to The National Lottery Heritage Fund.

Leicester, Lichfield, Newcastle and Worcester Cathedrals announced awards from The National Lottery Heritage Fund for a wide range of creative community-focussed projects, including bringing Worcester's 12th century undercroft into public use as an imaginative learning hub and new city venue, and creating a sacred space for all to enjoy in Newcastle's city centre.



The news followed a huge international reaction to the fire at Notre Dame which showed something of the value of cathedrals to local and wider communities, as well as their vulnerability, and the need for securing long-term funding for repairs and restoration. Development projects, like those funded through The National Lottery Heritage Fund, remain crucial for all of the Church of England's cathedrals.

## Church Commissioners for England achieve a positive return of 1.8% for 2018

Despite a challenging year for investment markets, the Church Commissioners have reported a positive return of 1.8% in 2018.

The value of the Commissioners' investment fund now stands at £8.2bn. Holdings in strategic land, private equity, timber, infrastructure and indirect real estate combined to help to keep the fund's performance in positive territory.

Over the past 30 years the fund has achieved an average return of 8.9% with the 10-year average at 10.7%. This is against the Church Commissioners' target return of RPI +5% which at 30 years, stands at 8.2% and 8% for the 10-year period.

The Church Commissioners distribute returns from the fund to the Church of England, accounting for approximately 15% of the Church's running costs.



# In praise of stalwarts

In the church I belong to we recently suffered two deaths in quick succession. Two of our older members (both in their eighties) passed away within a short time of each other, and we will miss them dearly.

Doreen was with us from when we first started the church some 27 years ago. The matriarch of a large family, she was quiet and unassuming, yet deep in her faith and she never missed a Sunday. Kath was full of life, a woman of prayer who witnessed keenly to anyone she met, and whose constant prayer was for revival. They will leave a huge gap in our fellowship, because they were both 'stalwarts'.

'Stalwart' is a Scottish word usually applied to someone who is physically strong, hardy, robust and courageous. It is used nowadays to describe someone who is loyal and reliable, hard-working and deeply committed to a cause, especially over a long period of time. At the same time, it may give a slight suggestion of someone who is not very exciting, even a little boring because they never seek the limelight or do anything particularly dramatic. Most churches would not function without a good number of stalwarts because they are foundational people. They are the ones we all rely on to do the jobs that need doing without fuss. They are always there, and we can depend on them, but it is easy to take them for granted. And that is the danger.

Stop and think for a moment about the stalwarts you know. Who are they? How can you encourage and appreciate them? And if you are a stalwart yourself, don't undervalue your contribution. You are vital to your church's stability. *Tony Horsfall*



*With wildflowers the fields God has arrayed;  
In their beauty His glory is displayed!  
They are here for a season to unfold;  
Then they are gone no longer to behold;  
But someday soon the earth shall be remade,  
And wildflowers shall never again fade!  
Their beauty shall blaze forth eternally  
With more splendor for every eye to see!*



Perry Boardman



# One in four people in debt were born into money struggles

A recent report by Christians Against Poverty (CAP), called Changing Perceptions has revealed that the financial problems of parents can have a profound effect on their children's future relationship with money. More than one in four of CAP's current clients grew up in a household badly affected by debt.

It seems that money worries are an 'intergenerational anxiety'. The report says that the impact that parental debt has on children "is far reaching, from taking a toll on their emotional wellbeing, to parents being unable to provide adequate food or clothing and feeling that their debt was affecting their children's future life chances. Where parents are struggling to provide for their children, feelings of guilt and shame are particularly acute."

Chief Executive Matt Barlow said: "When you've grown up with debt as the backdrop, it takes a huge leap of imagination to believe that life can be different. There's also no one to show you the right way to prioritise, plan ahead or even talk about finances."

Low income is the most common reason for personal debt. The average household annual income is £12,361 and a third of those being helped are living on less than £10,000 per household, per year.

## What a cup of coffee can do for the elderly

Here is a curious thing: even just one cup of coffee a day can reduce the risk of an elderly person falling – by up to a third.



A recent study of thousands of older patients from the UK and Spain has found that even small amounts of coffee are enough to make them steadier on their feet.

That is good news for many elderly folk, as about one in three people over 65 will have at least one fall a year, and half will fall frequently. This is because older people can suffer balance problems, weaker muscles, dementia or low blood pressure.

The study was done at a university in Madrid. All in all, it costs the NHS £2.3billion a year to treat and care for elderly patients who suffer a fall.



# Bishop calls for churches to garden for mental health

In early June Lambeth Palace hosted a conference exploring the links between mental health and gardening, which saw a fresh call for churches to use their green space to offer ‘therapeutic gardening’. Green Health Live 2, which brought together chaplains, public health experts and healthcare professionals, showcased innovative work being done by parishes to provide therapeutic gardening spaces – and encouraged more churches to work with local mental health charities and medical professionals to do the same. Last year a survey of clergy showed that mental health issues were at the top of the list of problems they were faced with within their parishes. Research suggests gardening can help to relieve the effects of depression, loneliness and a range of mental health issues, but many people, particularly in towns and cities, do not have gardens of their own. Churches often have space where a garden can be created to offer basic gardening experience, access to nature and companionship.

The conference, organised by the Church of England’s Environmental Working Group, was opened by Professor Jim McManus, who is President of the Guild of Health and Vice-President of the Association of Directors of Public Health. Other speakers included the Bishop of Carlisle, James Newcome, the Church of England’s lead bishop on healthcare issues; Professor Harriet Gross of the University of Lincoln and author of *The Psychology of Gardening*; and former politician and now prison chaplain the Revd Jonathan Aitken.

The Bishop of Carlisle, James Newcome, said: “Churches are places where people can find healing and community, so it is no surprise – but it is absolutely wonderful – that growing numbers of parishes are providing spaces for therapeutic gardens. It’s my hope that churches will embrace this opportunity to make a valuable and vital contribution to supporting mental health in our communities.”

Professor Jim McManus said: “The evidence that gardening has physical and mental health benefits – from relaxation and destressing to coping with anxiety – and physical strength benefits is unquestionable. Churches have enormous potential to help people build resilience and cope with problems through gardening. This is a huge untapped asset for the public’s health, and by championing this, Green Health Live is leading the way through practical examples and providing scientific and theological rationale.”

Professor Harriet Gross said: “Gardening is good for mental health; it reduces stress and can raise your mood. Gardens also allow reflection or thinking of nothing. Convincing evidence shows the benefits of being purposeful outdoors in nature, which is engaging but mentally undemanding. Creating gardens with others in shared spaces, like churches, brings personal and social benefits too, as well as providing a safe place to go and to take part in activities, where people feel valued as individuals.”

The Revd Jonathan Aitken said: “Therapeutic gardening has a valuable role to play in the rehabilitation of offenders and as a calming and caring influence on prison communities. During my prison sentence 20 years ago I noticed that working in the garden was particularly helpful to those prisoners suffering from mental health problems.

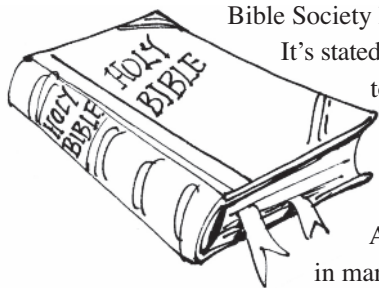
# Religious music is everywhere



An astonishing fact about our secular age is that “religious music is absolutely everywhere, all the time.” So says Ivan Hewitt, former presenter of BBC Radio 3’s Music Matters. Hewitt believes that there is some significance in this. He wrote recently: “I would say it shows that in a stressful age, people have developed a need for music that quietens the mind, offers a haven from the hurry and noise of everyday life, and unlocks a passage to our deeper selves. Despite the decline of organised religions, there is still a vast, inchoate sense in the population at large that there is more to life than getting and spending. Religious music gives us access to that realm, without the commitments of organised religion.”

---

## Lyfe Journal: a helpful way of learning about the Christian faith



Bible Society has launched a regular magazine called Lyfe Journal. Its stated aim is to provide ‘inspirational articles and activities to help you deepen your faith’.

It is aimed at people who “love to engage with their faith in a more thoughtful way, but who don’t have the time to read long books.” And so the magazine provides “insights and reflections in manageable sizes from engaged Christians.”

Each edition draws on the Scriptures and invites the reader to explore different spiritual practices in more depth.

Here are details of the first two issues, which each costs £4.99:

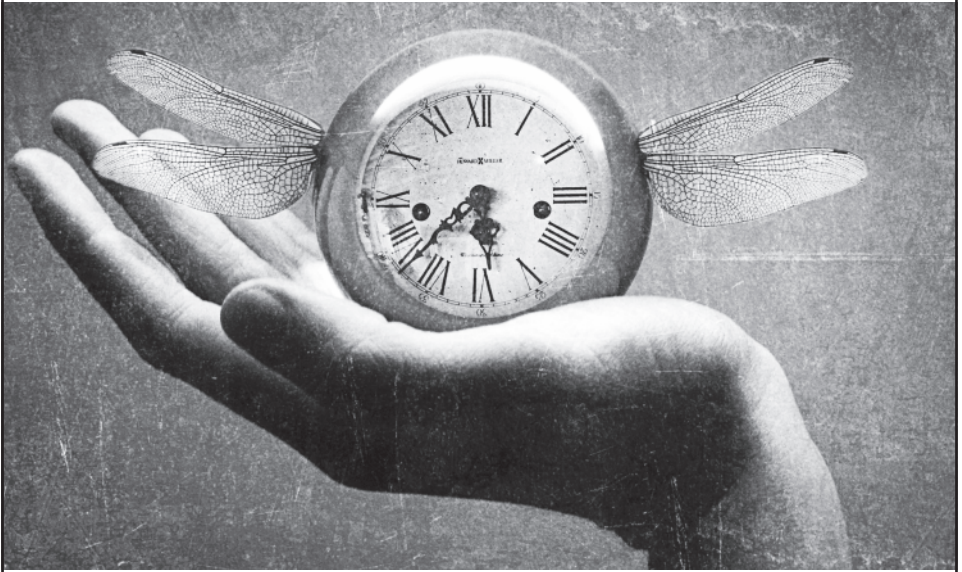
Issue 1: PRAYER. Whether you consider your prayer life to be dynamic or deep, this issue will help you reflect on and discover new ways of praying. Includes interviews with Krish Kandiah and Pete Greig, founder of the 24/7 prayer movement.

Issue 2: HOLY SPIRIT. How do we relate to the Holy Spirit? Including features from Christy Wimber and Paul and Becky Harcourt, leaders of New Wine England, this issue will inspire you to pursue a deeper understanding of the Holy Spirit.

Details at: <https://www.biblesociety.org.uk/products/9780564046478/>

---

# We Have Time On Our Hands



## Do you need company and someone to talk to?

Perhaps you don't see anyone from one week to the next. Or you are a carer who needs a bit of 'me' time.

We hope to create an opportunity for you to meet others who may feel like yourself within a safe, informal and relaxed atmosphere.

We are starting a small group, up to 6 people (any age). Meeting once a month on a Tuesday between 1.00pm - 3.00pm in Cheadle Hulme.

We will offer a relaxed environment where you could just chat and feel at ease. Everyone has something that they are good at and it would be great to be able to share your skills, knowledge and interests.

If you have any questions and are interested in joining us, please contact:

**Mel on 0161 485 5486 or mobile: 07916 771224**  
**email: [mel@brohn.co.uk](mailto:mel@brohn.co.uk)**

# Nature's Symphony

As dark gives way to light and day begins to dawn the symphony of sounds begin. First a single chirp from a lone bird, then a response from a mate in reply. Then as if on cue, the other birds in the arena join in the antiphonal motif of call and reply. And before long the entire orchestra of feathered creatures are engaged in a full-throated chorus of praise to their Creator for the dawning of another day.

Next it is the sun's turn to serenade its Creator with sounds of praise quite different from the birds. Within its bowels acoustic waves bounce from one side to another causing its surface to jiggle, much like the surface of a bell oscillates when struck by its tongue. Though we can't hear it, the sun is playing a secret melody as part of the natural universal symphony.

If we could hear the sound it would make our soul quake and our eardrum brake because the frequency is so low that it throbs with a super-deep perpetual bass. The sun not only sings but it provides the lighting effects that serves as the backdrop for symphonic sounds that surround us all through the day.

Then there is the forest full of upright stick figures that look like caricatures of humans. In winter they look like ghostly skeletons, in spring like young maidens in delicate dresses that turn into full-flowing green robes in summer and colorful kimonos in fall. They need the wind to make them sing. As the wind blows through their stems and leaves it produces music so soothing and sweet.

At times the notes are loud and shrill, like the sound of violins wafting up a hill. But as the velocity of the wind decreases, the notes are more mellow and soothing. Then to add contrast the wind blows much slower producing baritone and bass with such skill. The occasional sound of a chirp, a bark, a howl, punctuates the score of this symphony so stirring.

Sometimes the conductor pulls out all the stops and nature explode with loud sounds that pop. The winds howl and branches snap as trees sway then the rain joins in the refrain, turning leaves into tambourines and shakers. An occasional thunderclap and lightning flash create a wild symphony that most surely rocks.

As creatures of the Creator's hand, we too must add our songs sublime, by living for his glory now, we join with birds, sun, wind and trees, and stars and mighty oceans wild, to daily raise our voices loud, in thanks to God, for life and Son, as part of nature's symphony of praise.

## FRIDAY CLUB

Friday 10th May "John Rylands Library" Lesley Crowley-Bull



Lesley is a textile artist and she brought with her four pieces of work inspired by the John Rylands Library in Deansgate, Manchester. Lesley began by telling us about the history of the library.

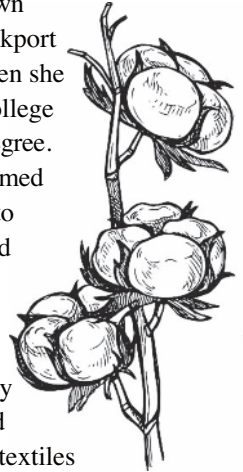
John Rylands (1801 - 1888) was the youngest son of Joseph Rylands who made hand looms and his sons joined the business. John encouraged diversity and they imported cotton, spun and wove their own thread, made fabrics and dyed them. Eventually they also made the finished fabrics into products and sold them. The business prospered and John became very rich.

In 1888 he died and it was his third wife, Enriqueta, who decided to build the library as a memorial to him. The library eventually opened twelve years after his death. It was built in the neo-gothic style, beloved of Victorians, with many references to cotton. Enriqueta bought book collections for the library and on her death she left the library to the people.

Lesley then told us some things about her career. She had drawn and sewn from an early age and she attended a course in textile design at Stockport College. She first visited John Rylands Library on a college trip when she was sixteen but she wasn't very interested in it at that time. After college she went into industry and later completed other courses and won a degree. Lesley is a member of a group called Ten Plus Textiles, which was formed in 1991 by ten textile artists, based in the North West, who wanted to promote an appreciation of embroidery in all its forms. The group visited the John Rylands Library and this time Lesley was impressed by it and came away with inspiration for her craft work.

The first piece of work that Lesley showed us was a cotton flower that is carved in stone at the Library. Her representation was cleverly done in fabric which looked very like the stone original. The second was a large piece based on the arched windows of the library using textiles to represent stone, glass and metal. The third piece showed one of the ornate light switches. The Library was one of the first buildings in Manchester to be lit by electricity, which was originally generated on site but later mains electricity was introduced in the 1950s. The fourth art work showed a lizard-like creature that lived under the leaves of the cotton plant and ate the grubs and insects that were harmful to the plant.

The John Rylands Library is now part of the University of Manchester and everyone is welcome there to study, do research, or simply enjoy the building. A modern extension has been built to house a cafe, shop and reception area. Lesley was thanked and we enjoyed our usual refreshments.



Julia Ball



### *Friday 24th May “Snapshots of Morocco” Mrs Barbara Brooks*

Mrs Barbara Brooks visited Friday Club to tell us about her two visits to Morocco. Her first visit was at the age of 17 but she admitted she remembered little of that holiday so she concentrated her talk on a more recent tour. Starting in Rabat she also visited Medina, Casablanca, Marrakesh and Fez as well as many smaller towns. There was much in common in all the larger cities. Entry was through heavy doors, set in high walls, surrounding the oldest part of the city. The arches over the entry doors were carved with the most fantastic designs. Once through the doors, the houses were very tall and set on extremely narrow cobbled streets leading to the most beautiful squares, with, in most cases, no motor transport allowed. Donkeys were used to transport goods and everywhere was kept clean and tidy.

Most towns and cities had open-fronted shops and stalls in a market known as a souk. These occupied large areas so it was easy to get lost. To purchase goods Mrs Brooks told us that you had to haggle, but admitted she found this difficult. She visited several mausoleums, the most outstanding being the one containing the tombs of the father, grandfather and great grandfather of the present king Mohammed VI. The building was beautiful with a large dome set into the roof, stained glass windows, fantastic carving and wonderful patterned tiles making more beautiful patterns on the floors and walls. The tombs were marble and much of the decoration was gold. Local people had constructed the building over a period of six years. All the building materials were locally sourced except the chandeliers which were Venetian glass.

Casablanca has a population of six million and is the business and economic capital. It is one of the few places where you took your life into your hands to cross the very busy roads. On our TVs we see an advert showing goats climbing argan trees. Barbara saw this happening whilst travelling through the rough land around the Atlas Mountains. Local people gather argan nuts, roast them and extract the oil to sell for cooking. They also collect and create a variety of spices to enhance their cooking, but also, as there is no NHS available, use them for medicinal purposes. The only item Morocco imports is electricity from Western Sahara where it is produced using solar panels.

Marrakesh is well known for its lovely gardens and is used, as is much of Morocco, for filming. Game of Thrones was filmed there fairly recently. Barbara told us of her experiences with the food and about the famous soft leather goods. Also how mulberries are used to dye silks and some of the people knit the most beautiful garments.

The Moroccans are by and large cheerful and helpful people. She finished her illustrated talk with a Moroccan quote: “Make use of bread, because God will provide the honey.” Mrs Brooks was thanked for her interesting talk and our meeting closed after our usual refreshments. *Ann Hewitt*

### **Dates for Your Diary**

*5th July* “A Visit to the Antique and Collectors Fair” Betty Hayhurst  
7.30pm ALL WELCOME

*12th Jul* Summer Lunch at the Gold Suite, Deanwater Hotel 12.30pm for 1.00pm

*25th July* Corporate Communion for Friday Club at 10.00am ALL WELCOME



**Musica Nova's** next concert takes place on Saturday 6th July, 7:30pm at All Saints' Church. A contrasting programme features popular works for both string and wind instruments, **Dvořák's Serenade for Strings** and **Gounod's Petite Symphonie**.

Antonín Dvořák's Serenade for Strings is a charming piece of many characters - playful, passionate, lyrical and dancing. Dating from 1875, the work remains to this day one of Dvořák's most popular orchestral works.

The wind instruments take centre stage for French composer Charles-François Gounod's beautiful Petite Symphonie. This cheerful and melodious work was written in 1885 and will be performed by nine wind players.

The concert takes place at All Saints' Church on Saturday 6th July at 7:30pm.

Tickets are £10 full price, £8 concessions and accompanied children under 16 are free. Tickets are available on the door, or to reserve in advance please call **07583 165175**, email **musicanova@rocketmail.com** or ask at the church.

For more information about Musica Nova please visit **[www.musicanova.co.uk](http://www.musicanova.co.uk)**

# The extraordinary Sarah Chang

When, in 2010, 4000 delegates from 198 countries gathered in Cape Town, South Africa, for the Lausanne Movement's Third International Congress on World Evangelization, one unlikely speaker stood out from the rest. She was a young North Korean orphan, dressed in her high school uniform, who told the story of her family's escape from the regime and of her desire to take the Gospel back to North Korea herself one day.



Her name was Gyeong Ju Son, now known as Sarah Chang. She had been brought to Cape Town as a last-minute speaker and was utterly shocked at the size of the gathering, she had been expecting to speak at a small church. Little did she know how her life would be changed from that moment on.

For her testimony went viral online, and she was offered a full scholarship to Biola University in California as soon as she left high school. And during her last year at school in South Korea, Sarah met a Miss Yoo, who became an unnie (older-sister figure) to her while they attended Sarang Church together. It was through Miss Yoo that Sarah began to realize God's specific calling on her life.



For Miss Yoo owns and runs a major restaurant in South Korea.

She uses it to reach out to North Korean refugees living in South Korea. She hires and trains them as her employees and sees how a steady income gives them a chance for education, friendship, and integration into South Korean society. Most importantly, their hearts begin to stir for God. They wonder, 'Who is this God that these kind-hearted people serve? We want to know Him too.'

"Before I met my unnie, I had thought only missionaries or pastors could do missions," says Sarah. "But through Miss Yoo, I realized you can also serve God's kingdom through business – and sometimes, you can reach people whom missionaries and pastors cannot." While at Biola, Sarah met and married a South Korean called Paul Chang. Their dream is to do business as mission, to start their own cosmetics business in South Korea within the next five years, reaching out to North Korean refugees.

Christians in North Korea continue to be among the most persecuted in the world, but Sarah and Paul are sure of their calling. Sarah tells of how God once spoke these words to her in a dream: 'Walk with me. I am your heavenly Father, and whatever has (and will) happen to you is because I love you.' As Sarah and Paul look Northward, the words of this promise go with them still.



Solicitors for Life | Est.1887

BUTCHER & BARLOW



## We are the Big Firm on your doorstep

Specialist legal advice for you, your family and your  
business and all close to home

*Successor practice of Hilary McCauley Solicitors Limited*



*For more information on the legal services we offer, including Wills, powers of attorney  
and residential property matters, contact Robert Morris at our Bramhall office.*

☎ 0161 439 8228

✉ [rmorris@butcher-barlow.co.uk](mailto:rmorris@butcher-barlow.co.uk)

📍 205 Moss Lane, Bramhall SK7 1BA

We have 10 offices throughout North Manchester and Cheshire and we pride  
ourselves on being a law firm with local connections but the size to provide  
an approachable expert in every field.

[www.butcher-barlow.co.uk](http://www.butcher-barlow.co.uk)

---

# CAN YOU HELP

Cheadle Hulme Communicare is a small registered charity that takes local elderly residents, who have difficulty with transport, to medical appointments. It is run entirely by volunteers and we **urgently** need new people to join us. We are looking for owner-drivers with clean licenses who could spare the odd hour to drive our clients to and from appointments.

We also urgently need telephonists to work from home one day a fortnight (approx.) liaising between clients and drivers. expenses are paid for both roles. All volunteers are DBS checked.

If you think you could spare a little time, phone us on **0161 485 5353** between 9.00am and 3.30pm Monday to Friday for details.

**We really need your help.**

---

## STATE REGISTERED PODIATRIST

**Andrew M. Fryer** B.Sc. (Hons) M.Ch.S S.R.Ch

- General Chiropody treatments
- Minor operations for ingrowing toenails under local anaesthetic
- Inserts/insoles for shoes
- Modern surgery with forecourt parking
- Day, evening or weekend appointments

**2 Pownall Road, Cheadle Hulme, Cheadle SK8 5AZ**  
**Tel: 0161 485 1028**



# ALL SAINTS CRAFT GROUP

The Craft Group meets on the 2nd and 4th Wednesdays at 2.30pm in the Church Meeting Room. We learn new skills and practise old ones. Tea/coffee, biscuits and good company are always on offer. Please join us. All are welcome.

For further details please contact Frances Pickett on 0161 439 8890.



## All Saints' Website and Facebook



Keep up to date with news and events on the All Saints' website. Find out about our charity work, community groups and listen to recent sermons.



Please contact Sarah Ball on: [comms@allsaintschadlehulme.org.uk](mailto:comms@allsaintschadlehulme.org.uk)

with any stories and updates.

Find All Saints' on Facebook at: <https://www.facebook.com/AllSaintsCH/> and "Like" us to get notifications about our news and events.



## Church Open

There will be no Saturday coffee morning in August.

The next one will be September 14th.



*The warmth of the sun's embrace,  
the gentle breeze swept in by incoming tide,  
the rhythm of seasons,  
of new birth,  
death and recreation.*

*All these speak so clearly of your love,  
your power  
and your beauty.*

*All are expressions of your creativity,  
and more importantly of yourself.*

*As an artist might share his personality  
within each brushstroke,  
so within the myriad colours of a butterfly's wing  
you share the exuberance of your love.*







# Torch Trust celebrates 60 years of ministry to those with sight loss



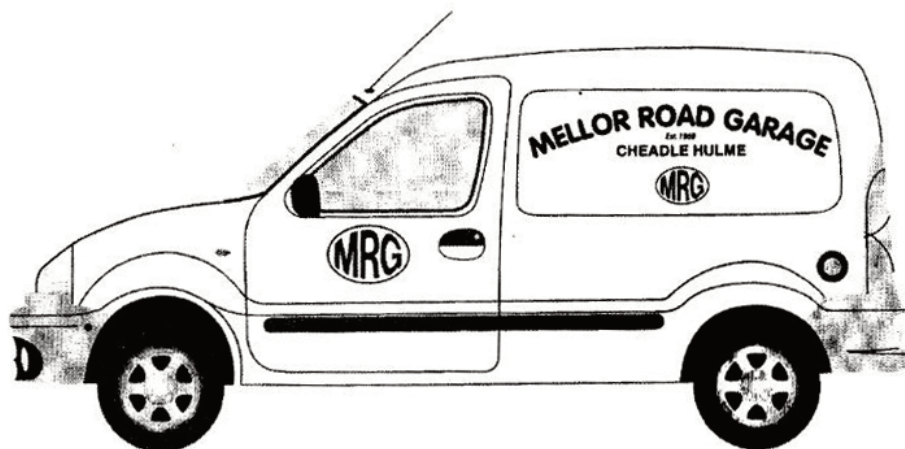
When Torch Trust was born 60 years ago, a vision burned to see God's Word in action, to enable all with sight loss to be fully able to play their part in a Christian community and to grow in faith.

From humble beginnings in 1959, and a family motivated by their love both for God and people living with sight loss, a community grew; extending God's love, providing support and employment for many with sight loss and those called into this ministry. 250 people daily in the UK receive a diagnosis of sight loss. The impact on their sight – and everything else – is life-changing and a challenge that deserves a kingdom response, ensuring that isolation and loneliness is not the reality in Christian communities, although so often this is the case.

Today's reality for Torch Trust is an established ministry. Chair of trustees, singer songwriter Marilyn Baker, who is without sight, champions the cause which sees Christian literature made available in accessible formats (large print, audio and braille); over 80 friendship groups established throughout the UK; holidays and retreats in our centre at Hurstpierpoint near Brighton, and partnerships with organisations across the globe from Malawi to Australia.

The humble heart remains, with a renewed and God-inspired vision for the future. Torch's time of celebration will mark the official launch of their Sight Loss Friendly Church initiative. Torch wants to connect with 50,000 churches across the UK; equipping them with resources and free expert advice, ensuring that every person living with sight loss is provided with the opportunity to grow in faith. Torch's website and team of advisors offer online resources, training and workshops, to help churches include all with sight loss. The recent initial launch had a positive response, with more than 40 churches signing up in two weeks.





# MELLOR ROAD GARAGE

**REPAIRS - BODYWORK - SERVICING  
TYRES - EXHAUSTS - M.O.T  
ENGINE MANAGEMENT DIAGNOSTICS**

**Established over 45 years**

**0161 485 3341**



# **SNOOKER**

Cheadle Hulme Institute  
Corner Gill Bent / Church Road

**3 TABLES**  
**DAILY ACCESS**  
**SOCIAL AND LEAGUE**

AGE 17+ or 13+ with guardian  
Afternoon snooker (age 65+)

**New members welcome**  
**also Thorn Grove Bowling Club**  
League and social bowling

ALL ENQUIRIES TO MR. G. CLOUGH  
**0161 485 6302**  
Email: chisnooker@hotmail.co.uk

## **ALL SAINTS' PARISH ROOMS** **CHURCH ROAD CHEADLE HULME**

(Licensed for Stage Plays, Music, Singing and Dancing)

### **Large and Small Halls**

Available for:

Concerts, Birthday Parties, Dances, Plays, Wedding Receptions  
or Commercial Exhibitions  
(Day or Evening)

**COMMITTEE ROOMS ALSO AVAILABLE**

Contact: The Caretaker, Parish Hall Cottage, Church Road, Cheadle Hulme

**Telephone: 0161 485 2596**

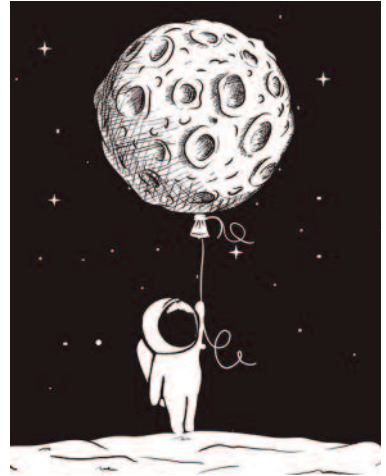
# Walking on the moon in July 1969

American astronauts Neil Armstrong and Edwin ‘Buzz’ Aldrin became the first people to walk on the surface of the Moon 50 years ago, on the 21st July 1969.

There had been some dispute over who would step first on to the Moon’s surface, but Apollo 11 commander Armstrong was given the privilege partly for technical reasons. Lunar module pilot Aldrin followed him almost 20 minutes later. Both men were Christians. Aldrin, who was an elder at Webster Presbyterian Church, Texas, had got special permission to take bread and wine with him to space and take Communion privately. He did this with Armstrong watching in silence.

Armstrong wrote later: “We had come to space in the name of all mankind – be they Christians, Jews, Muslims, animists, agnostics or atheists. But at the time I could think of no better way to acknowledge the Apollo 11 experience than by giving thanks to God.” The two men spent 21.5 hours on the lunar surface before rejoining the command module Columbia in lunar orbit.

Armstrong’s first step onto the lunar surface was broadcast on live TV to a worldwide audience. He described it as “one small step for a man – one giant leap for mankind”.



---

## Fewer of us give to charity

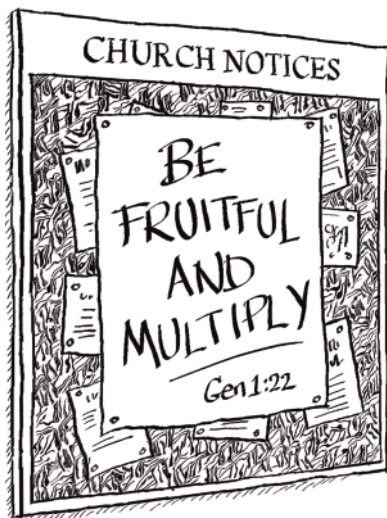


We are giving less time and money to charity than we were two years ago. That is the finding of a recent survey by Charities Aid Foundation (CAF). It found that the proportion of those of us giving money or sponsoring someone has dropped from 69% in 2016 to 65% in 2018.

The trend has been described as ‘worrying’ by the CAF. It comes as figures show that our trust in charities has fallen (from 51 to 48%).

Oxfam and Save the Children both attracted negative media coverage after staff were accused of sexual misconduct, while other charities have been accused of chasing vulnerable people.

CAF said that charities now have the challenge of finding ways “to inspire people to give and demonstrate that their money is making a difference.”



The vicar's attempts to increase the number of children attending services were becoming less and less subtle...



**East Cheshire Hospice**

*Making every day count*

Registered Charity Number 515104

East Cheshire Hospice thanks everyone for their kind donations in lieu of funeral flowers, wedding, anniversary or birthday presents. Over 80% of Hospice funding comes from voluntary donations including legacies. These gifts help to provide high quality, compassionate care free of charge to so many local people.

**For more information, please call  
Fiona Beasley on 01625 666991 or  
email [fbeasley@echospice.org.uk](mailto:fbeasley@echospice.org.uk)  
[www.eastcheshirehospice.org.uk](http://www.eastcheshirehospice.org.uk)**

*What is a home without A Mathers?*

**A. MATHERS & SONS**

**DECORATING CONTRACTORS**

(ESTABLISHED 1918)

**for free estimates  
and  
advice ring**

**R.N. MATHERS**

116 HULME HALL ROAD,  
CHEADLE HULME  
0161 - 486 0492

**S.J. MATHERS**

19 KINGSLEY DRIVE,  
CHEADLE HULME  
0161 - 485 8828

## CHRISTIAN PAGES™

'Are you a Christian in business or in a profession? Do you own or share a business, or are you self employed?'

If the answer is 'YES', then we are waiting to hear from you **NOW!**

Christian Pages™ will advertise your business and distribute copies of directories free of charge to local churches and congregations.

To receive information about how *you* can advertise your business contact: Tim or Barry as soon as possible on:

Tel: 01784 460080 Fax: 01784 462219

e-mail: [info@christianpages.org.uk](mailto:info@christianpages.org.uk)

web-site: [www.christianpages.org.uk](http://www.christianpages.org.uk)

Christian Pages™ successfully operating since 1991.

# Parish Calendar and Registers

## JULY 2019

### SUNDAY SERVICES

- 8.00am Holy Communion  
10.00am The Parish Communion.  
We welcome children and encourage them to bring their parents. There is a supervised creche in Church for the under 5's in the Meeting Room.  
On the second Sunday of each month this will be our Family Communion and Parade Service. We serve coffee in Church after the service - please come and join us.  
6.30pm Evensong.

### WEEKDAY SERVICES

Holy Communion:

Tuesdays at 9.30am  
Thursdays at 10.00am  
Holy Days as announced

Matins: Mondays, Wednesdays,  
Thursdays and Fridays at 9.00am

*See the weekly news sheet for further details.*

### ALTAR FLOWER ROTA

#### JULY 2019

- 7th Mrs S. Akroyd  
14th Mr N. Gardner - In memory of  
Enid Gardner and Fred and  
Norman Booth  
22nd Mrs L. Karuku  
29th -

*If you wish to discuss any aspect of church flowers including wedding flowers please contact Frances Pickett (0161 439 8890)*

## WEDDINGS

Congratulations to:

June 8 David Doodson and Rebecca  
Nelson

---

## *The Summertime*

*Thank you Lord for the golden sun  
That warms the earth from sky of blue  
The rays that brightens the summer's day  
Speaks of the love that flows from you*

*The summertime of heat filled days  
We thank you for the cooling breeze  
And the shade that cools us down  
Under the shadow of leaf topped trees*

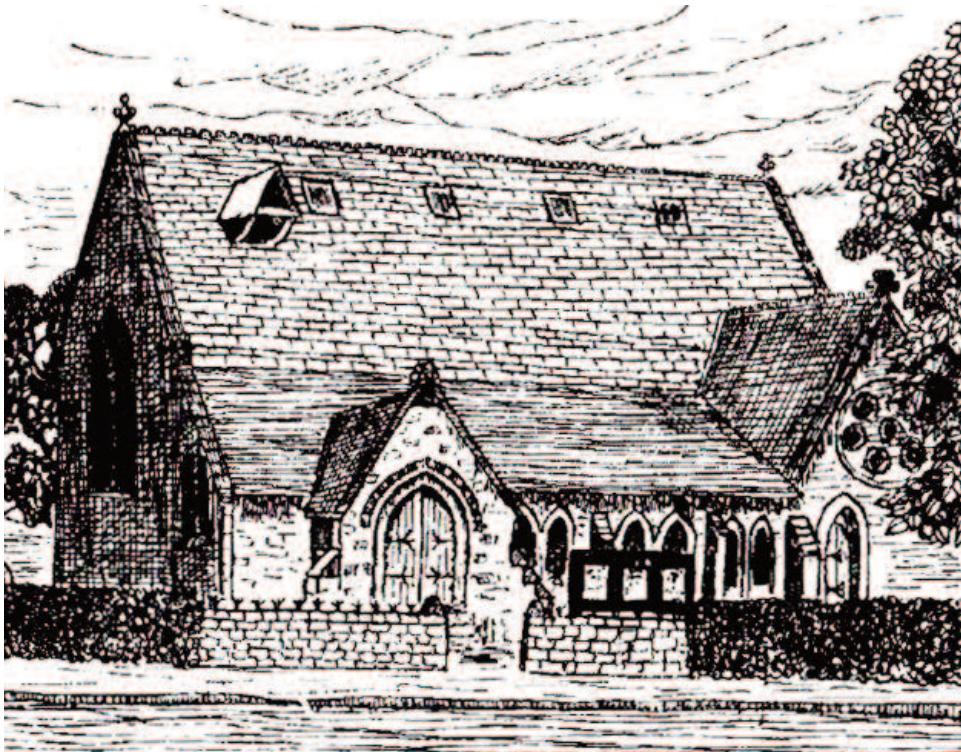
*We seek the shelter of your wings  
Your breath upon us like a cooling wind  
To ease the spirit and comfort the soul  
And the rest you give to us who sinned*

*We thank you for the sparkling sea  
To dive beneath its cooling waves  
And Lord we thank you for the blood  
Of your Saviour Son the One who saves*

*The summer days we thank you for  
The joys of spending sun filled hours  
Along the coast or countryside  
Or in the garden viewing pretty flowers*

*For in the heart redeemed by you  
Your Saviour Son brings a better clime  
Your rays of love; the sunshine of grace  
And for our souls it is always summertime*  
Colin Moffett





## Christian Stewardship

The Parish practises the principles of Christian Stewardship in its giving for the work of God. If you are interested to learn more about it please contact the Recorder, Kate Hughes (485 1010), the Vicar or the Churchwardens. The giving of time and talents is encouraged, If you wish to help in some capacity in the Church services or organisations, in improving or maintaining the Church fabric or grounds, or in visiting and helping the sick or housebound, please speak to the Clergy or the Churchwardens.

We also support COMMUNICARE, the volunteer service for the whole community, offering neighbourly help in emergencies and difficulties. Volunteers for this are also welcome and should contact the Communicare Secretary.

**COMMUNICARE**

**0161 485 5353**

MONDAY TO FRIDAY 9.00am to 3.30pm

# All Saints Cheadle Hulme

## PARISH DIRECTORY

**Clergy:** \*The Rev'd Janet Bacon, All Saints Vicarage, 27 Church Road SK8 7JL (485 3455)  
The Rev'd Janet Owens (Retired) (312 4683)

**Readers:** Mrs Pat Yates (485 4546)  
\*Mr Michael Aiers (439 7692)

**Church Wardens:** \*Mrs Janet Ashman (485 7969)  
\*John Ackerley (486 1419)

**Deputy Wardens:** \*Mrs Julia Ball (440 8647)  
\*Ms Sarah Ball (07966 146746)

**Organist:** \*Miss Trevlyn Thomas (485 8026)

**Sacristan:** \*Mrs Janet Valentine (439 8203)

**P.C.C. Vice Chairman and Treasurer:** \*Mr Jeremy Valentine (439 8203)

**P.C.C. Secretary:** \*Mrs Linda Ackerley (486 1419)

**Planned Giving and Gift Aid Secretary:** \*Mrs Kate Hughes (485 1010)

**Mainly Music Co-ordinator and Child Protection Officer:** \*Mrs Clare Russell (486 9304)

**Church Room Bookings:** Mr Neville Ashman (485 7969)

**Parish Rooms Bookings:** Ms Joanna Parsons, Parish Room Cottage, Church Road, SK8 7JB  
(485 2596)

**Electoral Roll Officer:** Dr David Jones (01625 850997)

**Parish Magazine Editor:** Mr Rhys Davenport (485 6772) Email: seed.design@mail.com

**Website and Social Media:** \*Ms Sarah Ball Email: comms@allsaintscheadlehulme.org.uk

**Parish Magazine Secretary and Treasurer:**  
Mrs Chris Spencer (485 8282)

**Deanery Synod Representatives:** \*Mrs Julia Ball (440 8647)

\*Miss Irene Walton (439 6096)

**P.C.C. Members are marked\* Other members**

Mesdames: L. Bacon, M. Epps, C. Jones, L. Karuku, Frances Pickett, S. Stone